



# STARFLEX

LIQUID WATERPROOFING



# SOME OUT OF MANY



Since 1955 **mpm** has been alongside the most important companies in the world with solutions, exclusive services and technologies at the forefront. Today the company holds a position of market leader in the sector of liquid waterproofing. Its **PURE** technology line of polyurethanes and polyureas are at the top as a quality standard.





# STARFLEX LIQUID MEMBRANES

THE **ONLY**  
**SOLUTION**  
FOR **WATER**  
**INFILTRATIONS**  
SINCE **1955**



**65 YEARS**  
Experience,  
Technology,  
Production



**QUALITY**  
Systems  
certified  
25 years

**PURE**  
technology  
The  
excellence of  
polyurethanes  
and polyureas

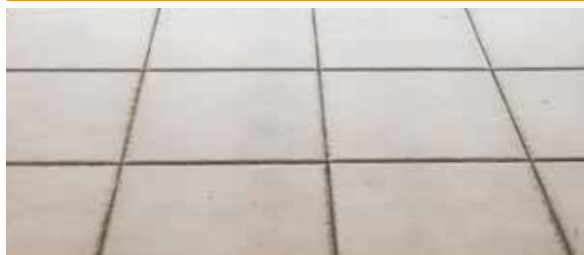


## BITUMINOUS MEMBRANES



<b>PRIMER 0230</b>	One component , solvent based polyurethane primer , <b>fast</b> curing (150g/m <sup>2</sup> )
<b>PRIMER 0230R</b>	One component , solvent based polyurethane primer , <b>extra fast</b> curing (150 g/m <sup>2</sup> )
<b>STARCEMENT 5/A</b>	Two component epoxy <b>water based</b> primer (100-150 g/m <sup>2</sup> )
<b>OR NO PRIMER</b>	

## TILES



<b>DUROGLASS FF4416</b>	Two component solvent based modified epoxy primer (200 g/m <sup>2</sup> )
<b>DUROGLASS P1/2</b>	Multi-purpouse epoxy resin binder <b>nonylphenol free</b> (from 300 g/m <sup>2</sup> )

## CEMENT



<b>DUROGLASS FF4416</b>	Two component solvent based modified epoxy primer (200 g/m <sup>2</sup> )
<b>PRIMER 0260</b>	One component solvent based polyurethane primer (150-200 g/m <sup>2</sup> )
<b>DUROGLASS P1/2</b>	Multi-purpouse epoxy resin binder <b>nonylphenol free</b> (from 300 g/m <sup>2</sup> )

## WET SUBSTRATES



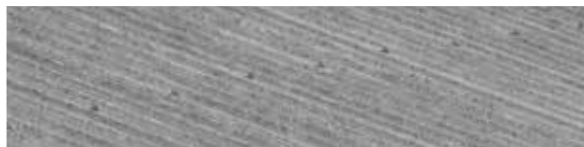
<b>DUROGLASS FU BIANCO TIX</b>	Water based 3 component modified epoxy. DPM primer (500 g/m <sup>2</sup> )
<b>DUROGLASS FU RAPID</b>	Water based <b>rapid</b> 2 component modified epoxy DPM primer (500 g/m <sup>2</sup> )

## WOOD



<b>PRIMER 0230</b>	One component , solvent based polyurethane primer , <b>fast</b> curing (150g/m <sup>2</sup> )
<b>OR NO PRIMER</b>	

## ALUMINUM + STEEL



<b>DUROGLASS FF4416</b>	Two component solvent based modified epoxy primer (200 g/m <sup>2</sup> )
-------------------------	---

## PVC/TPO/EPDM



<b>PRIMER 0130</b>	One component flexible solvent based polyurethane primer (150 g/m <sup>2</sup> )
<b>DUROGLASS FF4416</b>	Two component solvent based modified epoxy primer (200 g/m <sup>2</sup> )

## POLYURETHANES

### ONE COMPONENT POLYURETHANE

#### STARFLEX MONO

**One component** waterproofing **polyurethane** membrane moisture curing (600-900 g/m<sup>2</sup>)

+ reinforced with **STARTEX** fabric

### HIGH THICKNESS ONE COMPONENT

#### STARFLEX MONO TIX

Waterproofing membrane **single-component polyurethane** moisture curing (fino a 2,5 kg/ m<sup>2</sup>)

- **thixotropic**
- **quick**
- **anti UV**
- **no need for finishing**

+ reinforced with **STARTEX** fabric

(\*) Also available in fire certified version BRoof t (4)

## POLYUREA

### MANUAL

#### STARFLEX HR-M

Two-component waterproofing membrane **Self-leveling polyurea** (2,5 kg/m<sup>2</sup>)

### SPRAY

#### STARFLEX HR / HR-S / HR-E

Two-component waterproofing membrane **Fast polyurea** (2,5 kg/m<sup>2</sup>)

(\*) Also available in fire certified version BRoof t(4)

### ONE COMPONENT

#### STARFLEX MONO TOP S

**One-component** polyurethane top coat aliphatic (150-400 g/m<sup>2</sup>)

- **elastic**
- **not yellowing effect**
- **anti UV**

(\*) Also available in polyurea version

### TWO COMPONENTS

#### POLISTAR E/P

**Two-component** polyurethane top coat aliphatic (150 g/m<sup>2</sup>)

- **elastic**
- **not yellowing effect**
- **anti UV**
- **driveable**

# SYSTEME TYPE

## OVER EXISTING OLD MEMBRANE



- 0 Old existing roof  
(bituminous membrane, PVC, etc)
- 1 Specific primer
- 2 Liquid membrane **STARFLEX**
- 3 One color anti UV aliphatic top coat

# SYSTEME TYPE



## TYPICAL SYSTEM ON EXISTING SUBSTRATE



- 0 Existing substrate  
(concrete, tiles, etc)
- 1 Specific primer
- 2 Liquid membrane **STARFLEX**
- 3a One color anti UV aliphatic top coat
- alternative 3b New overlaid flooring



# POLYURETHANES

**STARFLEX MONO System** are liquid polyurethane waterproofing systems ideal solutions for seamless waterproofing.

Waterproofs at 360°

roof gardens

roofs

terraces

squares and foundations

balconies

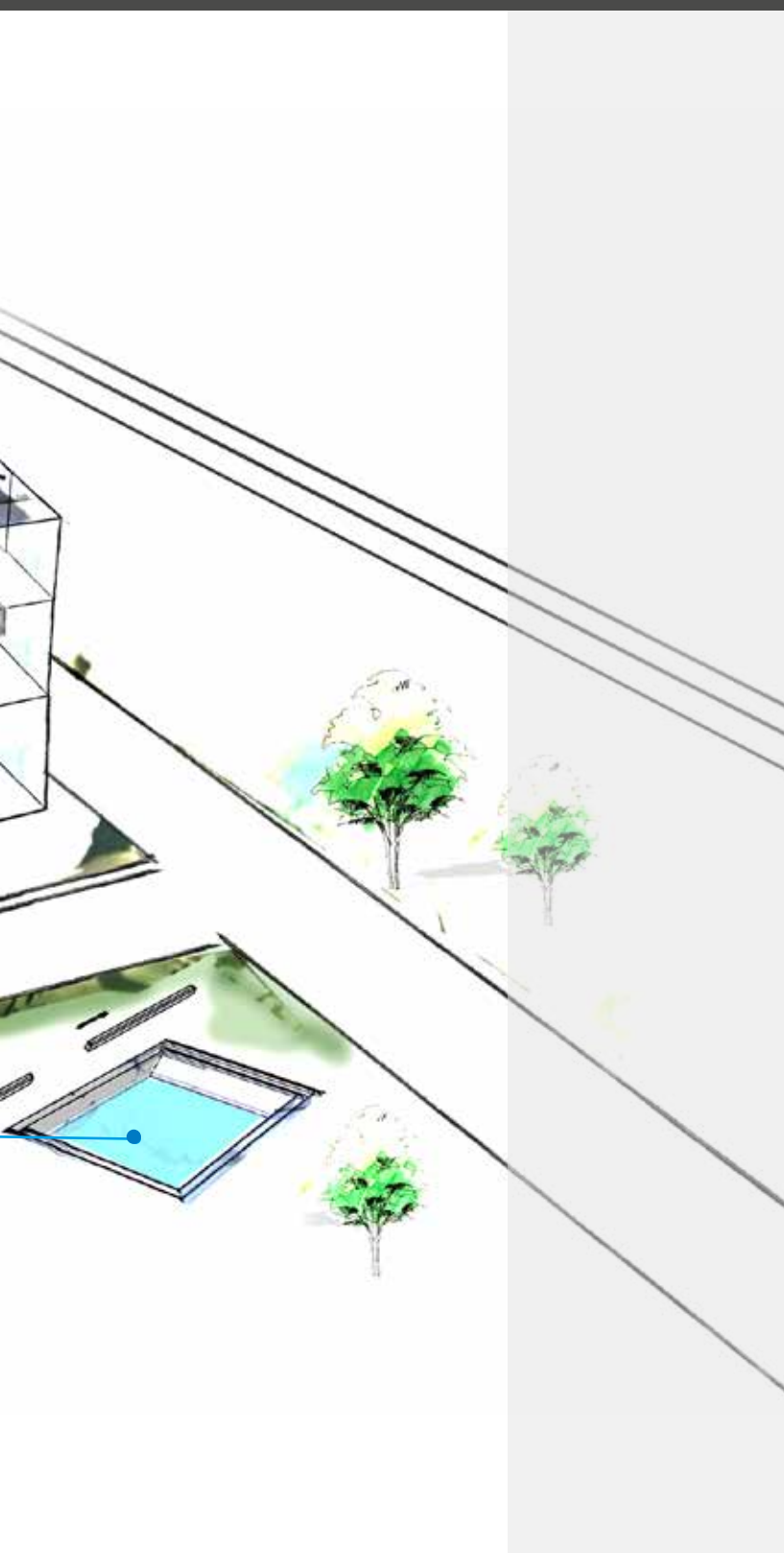
wet areas

retaining walls

swimming pools

All application fields





## MEMBRANE

STARFLEX MONO

STARFLEX MONO TIX

STARFLEX BLACK TIX

STARFLEX T

## TOP COATS

STARFLEX MONO TOP

POLISTAR E/P

## BENEFITS

1 COMPONENT

FAST

EASY TO USE

# STARFLEX MONO



POLYURETHANE MEMBRANE  
ONE COMPONENT  
WATERPROOFING  
MOISTURE CURING



CERTIFIED  
DURABILITY



## BENEFITS

- ✓ **Easy** and fast application
- ✓ High **elasticity**
- ✓ **Permeable** to water and to water vapor
- ✓ **Crack bridging** properties

## APPLICATION FIELDS

- Roofs, terraces and balconies
- Wet areas
- Roof gardens
- Renewal of old membranes

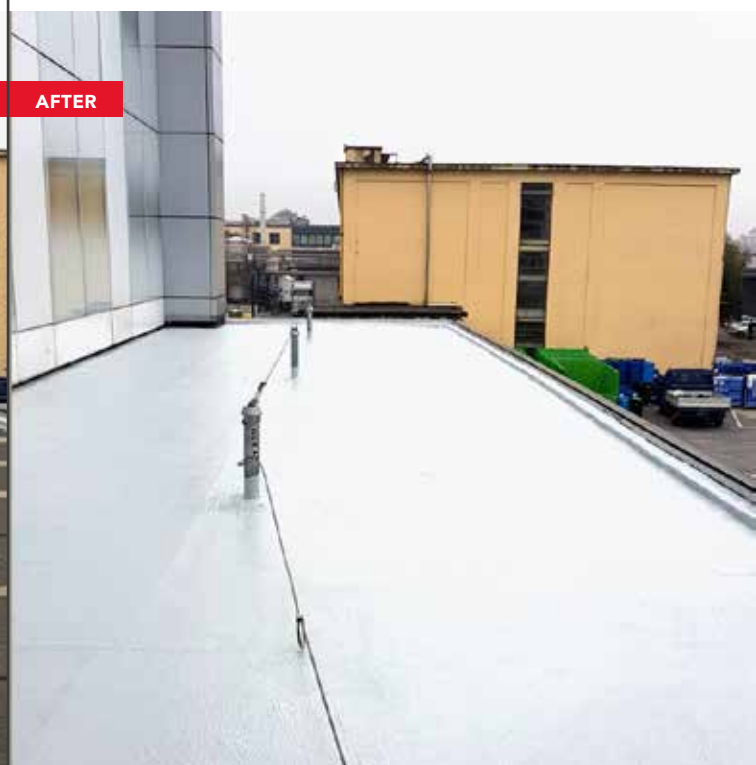
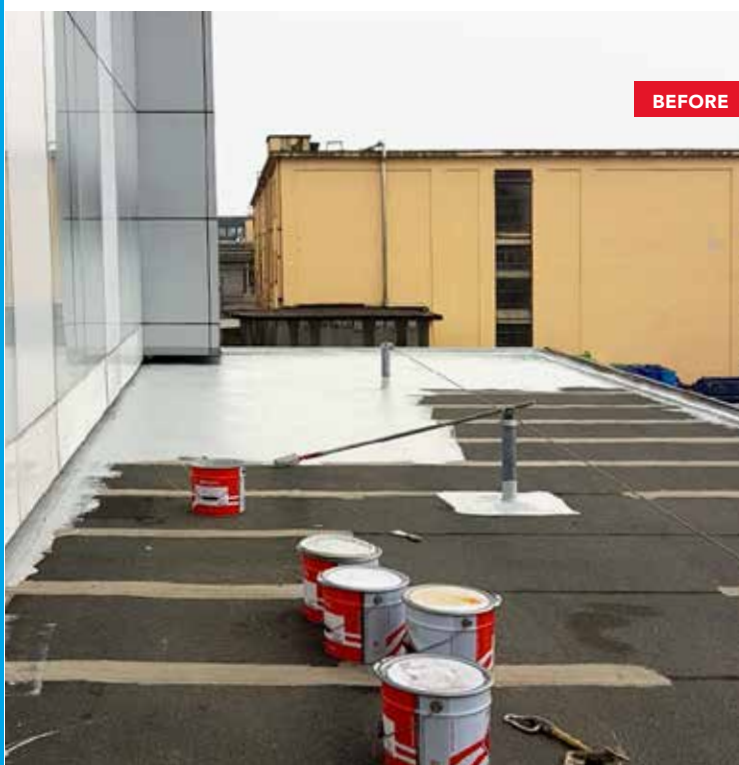
## CERTIFICATIONS



\* BBA e ETAG 005 pending

**PACKAGING:** 1kg – 6 kg – 20kg

**THINNER:** DILUENTE 15



# STARFLEX MONO TIX



POLYURETHANE MEMBRANE  
ONE-COMPONENT  
THIXOTROPIC WATERPROOFING  
MOISTER CURING



## BENEFITS

- ✓ High thickness in **onecoat**
- ✓ Suitable **in vertical** applications (thixotropic)
- ✓ **Wet on Wet** applications
- ✓ High **UV** resistance
- ✓ **Priming** is not necessary \*

## APPLICATION FIELDS

- Roofs , terraces , balconies
- Wet areas
- Roof garedens
- Renewal of old membranes
- Construction details on the roof

## CERTIFICATIONS



\* BBA e ETAG 005 pending

\* Except particular conditions (to be verified with the technical assistance)

**PACKAGING** : 1kg – 6 kg – 20kg

**THINNER** : DILUENTE 15



CERTIFIED  
DURABILITY



BEFORE AFTER



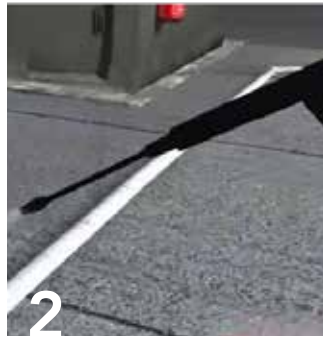


# APPLICATION STEPS

## EASY AND FAST



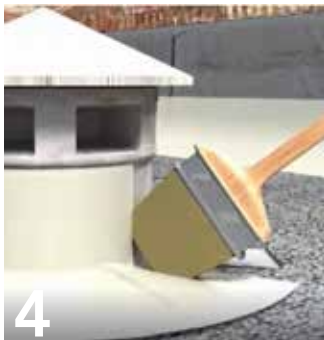
1  
MPM materials



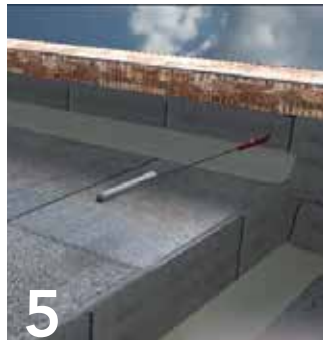
2  
Clean substrates, remove defects and contaminants



3  
Treat all joints and cuffs with **STARTEX NW DETAILS** fabric



4  
Treat the **construction details** that create discontinuity



5  
Apply the suitable **PRIMER** to the existing substrate



6  
Mix the membrane with **STARFLEX MEMBRANE** for 3 minutes



7  
In case of reinforcement, apply two layers of one-component **STARFLEX** membrane with the reinforcement in between **STARTEX optional**



8  
Wait for the time necessary for the application of the final layer



9  
Optionally apply a non-yellowing finishing layer **STARFLEX MONO TOP** or **POLISTAR E/P**



## EVERYTHING YOU NEED



**STARTEX NW**  
Non-woven polyester fabric 60 g/m<sup>2</sup>  
Reinforcement for all of our liquid polyurethane systems  
Size: 1 X 50 m



**STARTEX GM**  
Fiberglass fabric 220 g/m<sup>2</sup>  
Reinforcement for every of our liquid polyurethane systems  
Dimensions: 1,30 X 150 m



**STARTEX FC**  
Continuous thread fabric in polypropylene for our systems of cementitious waterproofing products  
Dimensions: 1 X 100 m

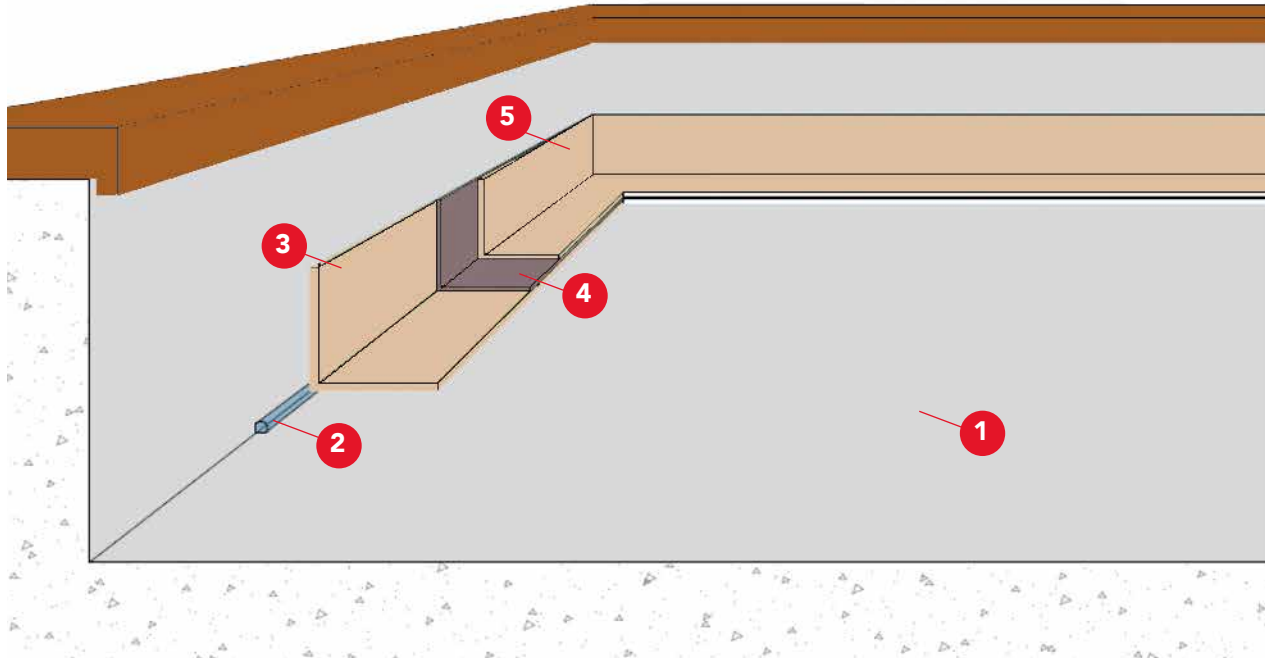


**STARTEX NW DETAILS**  
Polyester fabric for details construction  
Dimensions: 0,20 X 50 m



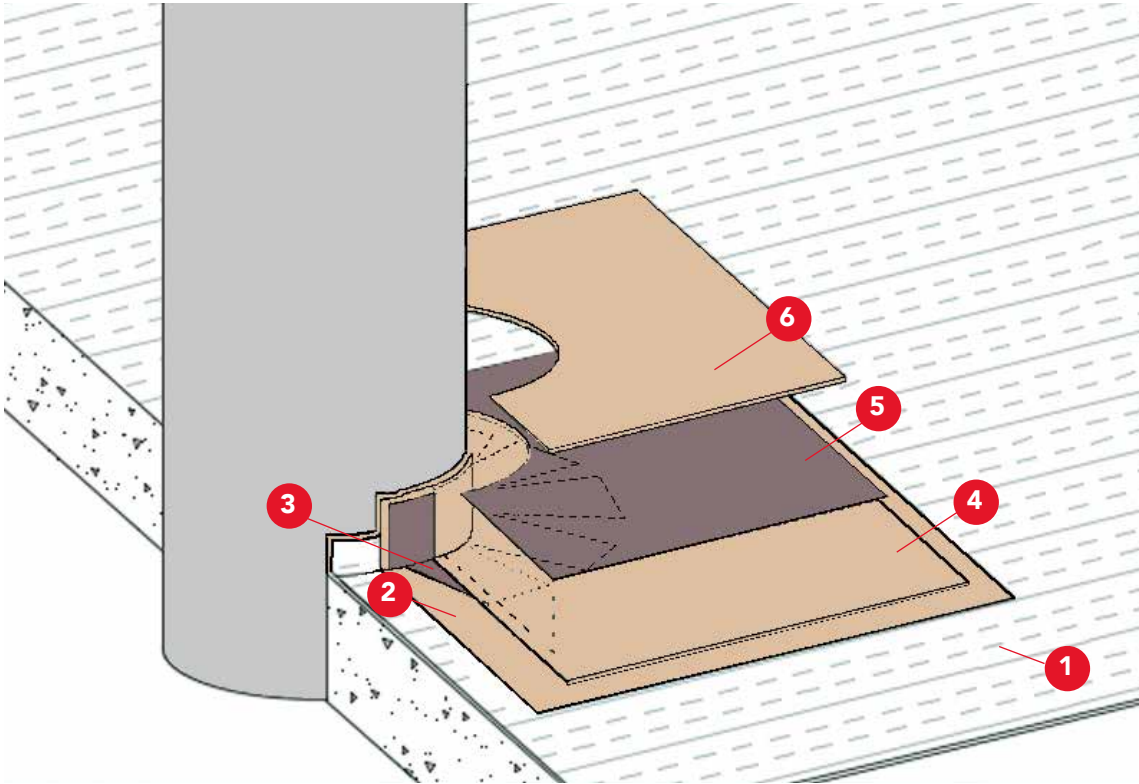
**STARMASTIC P95**  
Polyurethane sealant medium modulus single component elastic, for floor joints or special gaskets. This sealant adheres directly to concrete, marble, stone, steel, aluminum, glass, resin, wood and plastic. It can be over-painted with elastomers and has excellent elasticity and resistance to chemicals and water.

## SHELLS AND VERTICAL TURNS



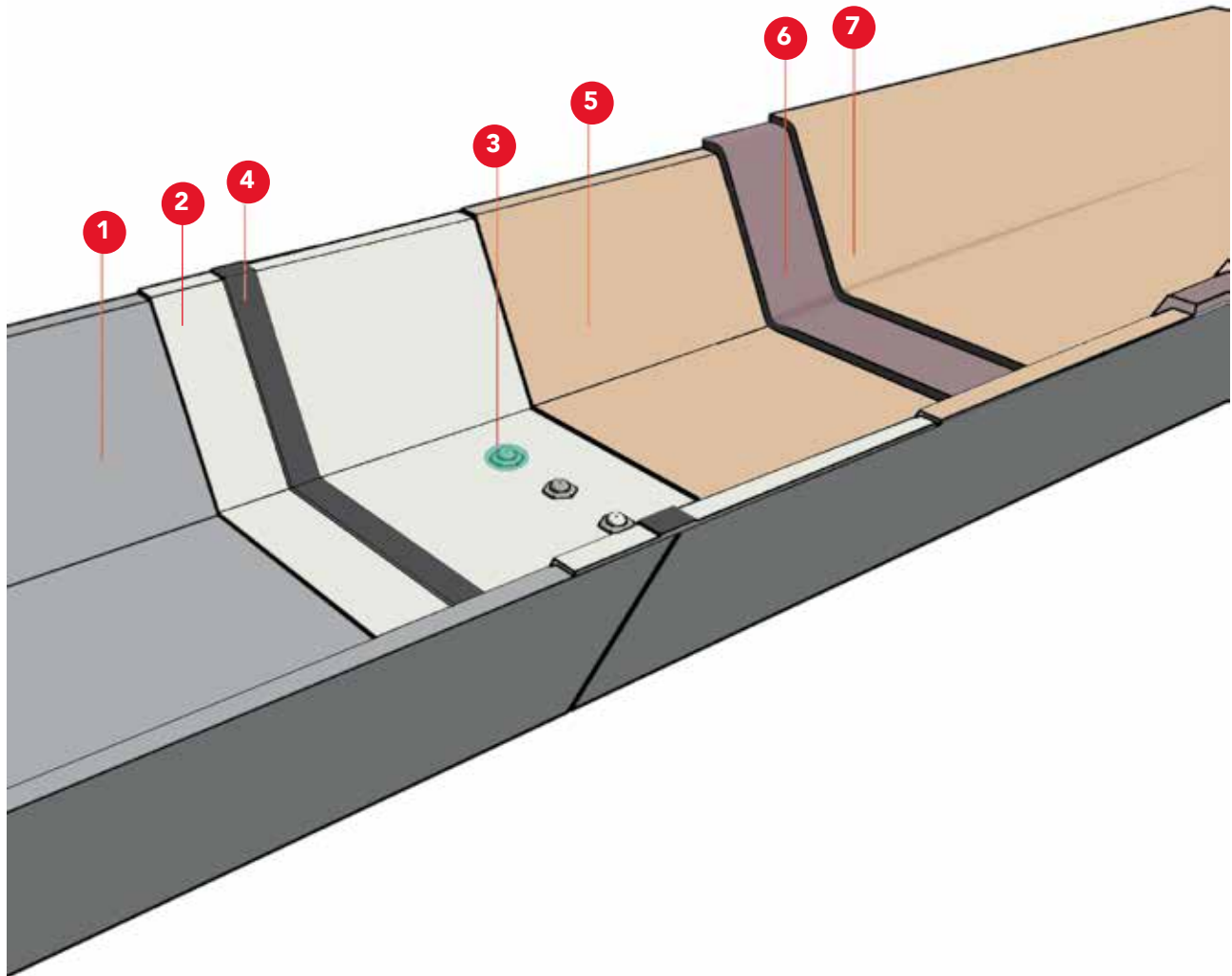
- 1 Cleaning the substrate
- 2 Application along the edge, of the polyurethane sealant **STARMASTIC P 95**
- 3 Application of the first coat of **STARFLEX** polyurethane waterproofing membrane
- 4 Wet application of a layer of **STARTEX NW** polyester fabric or **STARTEX NW DETAILS** making sure that it adheres perfectly to the underlying waterproofing layer
- 5 Application of the second coat of **STARFLEX** waterproofing membrane polyurethane

## CHIMNEYS WITH VERTICAL ELEMENTS



- 1 Cleaning the substrate
- 2 Application of the first layer of **STARFLEX** polyurethane waterproofing membrane, also applying it on the vertical surface to a suitable height
- 3 Cutting of the **STARTEX NW** polyester fabric along the long side so that it can be applied around the element vertically and making sure that it adheres perfectly to the underlying coating
- 4 Application of the second coat of **STARFLEX** polyurethane waterproofing membrane, in order to completely cover the **STARTEX NW** polyester fabric
- 5 Application of the second layer of **STARTEX NW** polyester fabric on a limited horizontal area
- 6 Application of a coat of **STARFLEX** polyurethane waterproofing membrane, on the area where the polyester fabric was previously applied

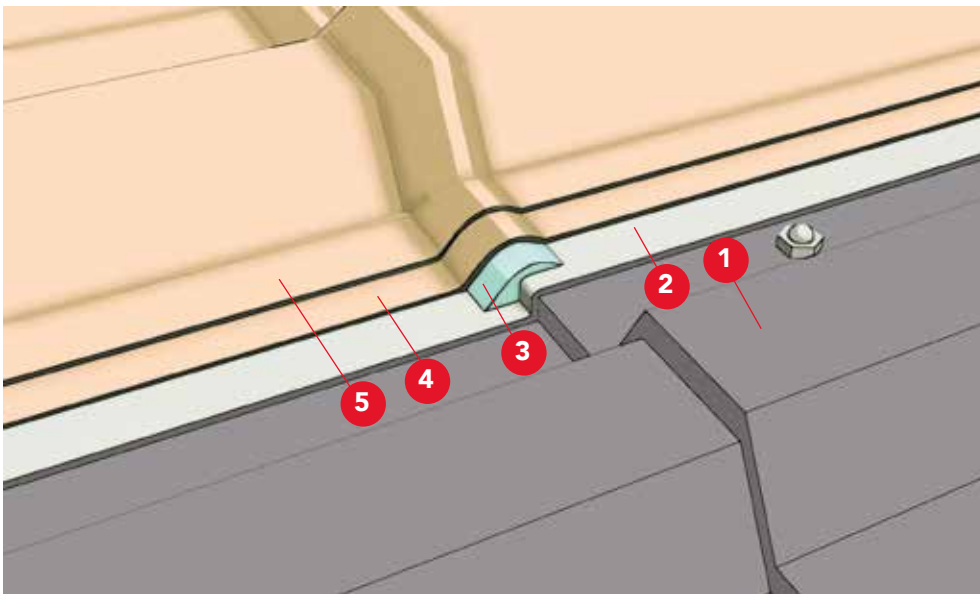
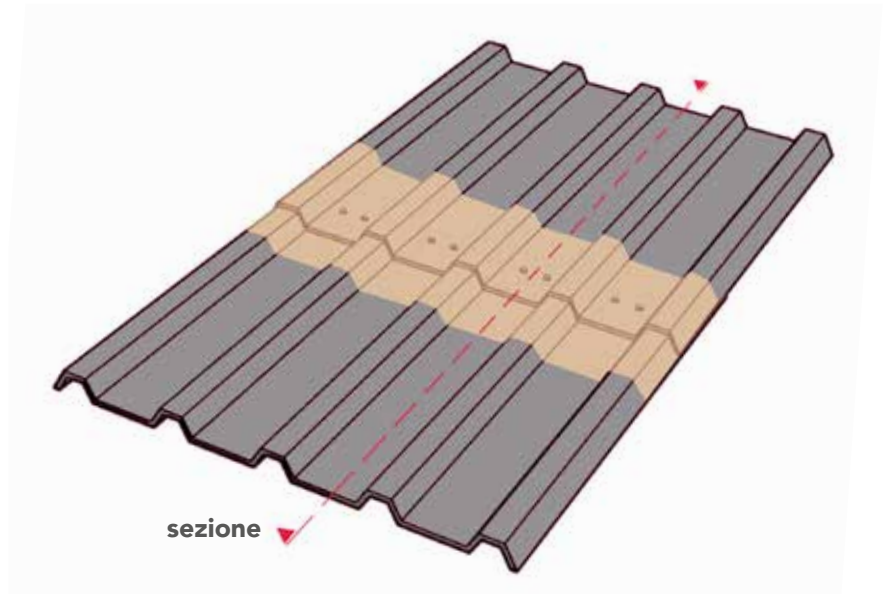
## GUTTER



- 1 Cleaning the substrate
- 2 Application of the epoxy primer **DUROGLASS FF 4416**
- 3 Application of **STARMASTIC P 95** polyurethane sealant on the fixings
- 4 Application of specific tape to cover the joints and obtain a seamless substrate
- 5 Application of the first coat of **STARFLEX** polyurethane waterproofing membrane
- 6 In the most degraded points, application of **STARTEX NW** polyester reinforcement
- 7 Application of the second coat of **STARFLEX** polyurethane waterproofing membrane



## OVERLAP OF SHEET



- 1 Roof sheet steel
- 2 Application of epoxy primer **DUROGLASS FF 4416**
- 3 Application of the polyurethane sealant **STARMASTIC P 95**
- 4 Application of the first coat of **STARFLEX** polyurethane waterproofing membrane
- 5 Application of the second coat of **STARFLEX** polyurethane waterproofing membrane

# STARFLEX BLACK TIX



SINGLE-COMPONENT MEMBRANE  
POLYURETHANE WATERPROOFING  
MOISTURE CURING BITUMEN MODIFIED



## BENEFITS

- ✓ Applicable vertically (**thixotropic**)
- ✓ High **elasticity**
- ✓ Excellent chemical and mechanical **resistance**

## APPLICATION FIELDS

- Retaining walls
- Foundations
- Construction details
- Wet areas (under tiles)

## CERTIFICATIONS



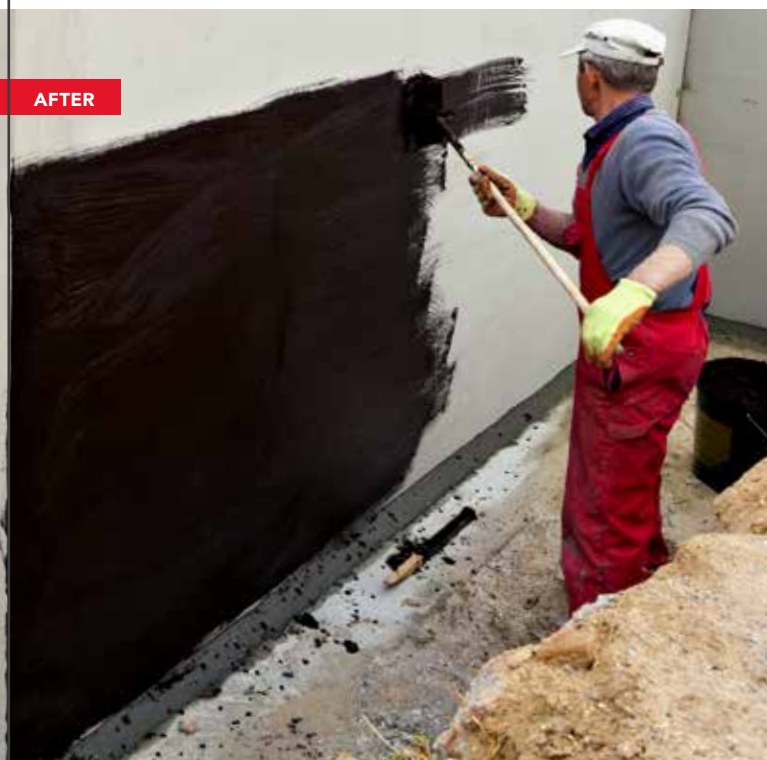
\* BBA e ETAG 005 pending

**PACKAGING** : 20 kg – 25kg



MEMBRANE

BEFORE AFTER





# STARFLEX T



ELASTIC COATING  
TRANSPARENT SINGLE-COMPONENT



## BENEFITS

- ✓ Simple application without primer
- ✓ UV **resistant**
- ✓ **No yellowing**, no chalking

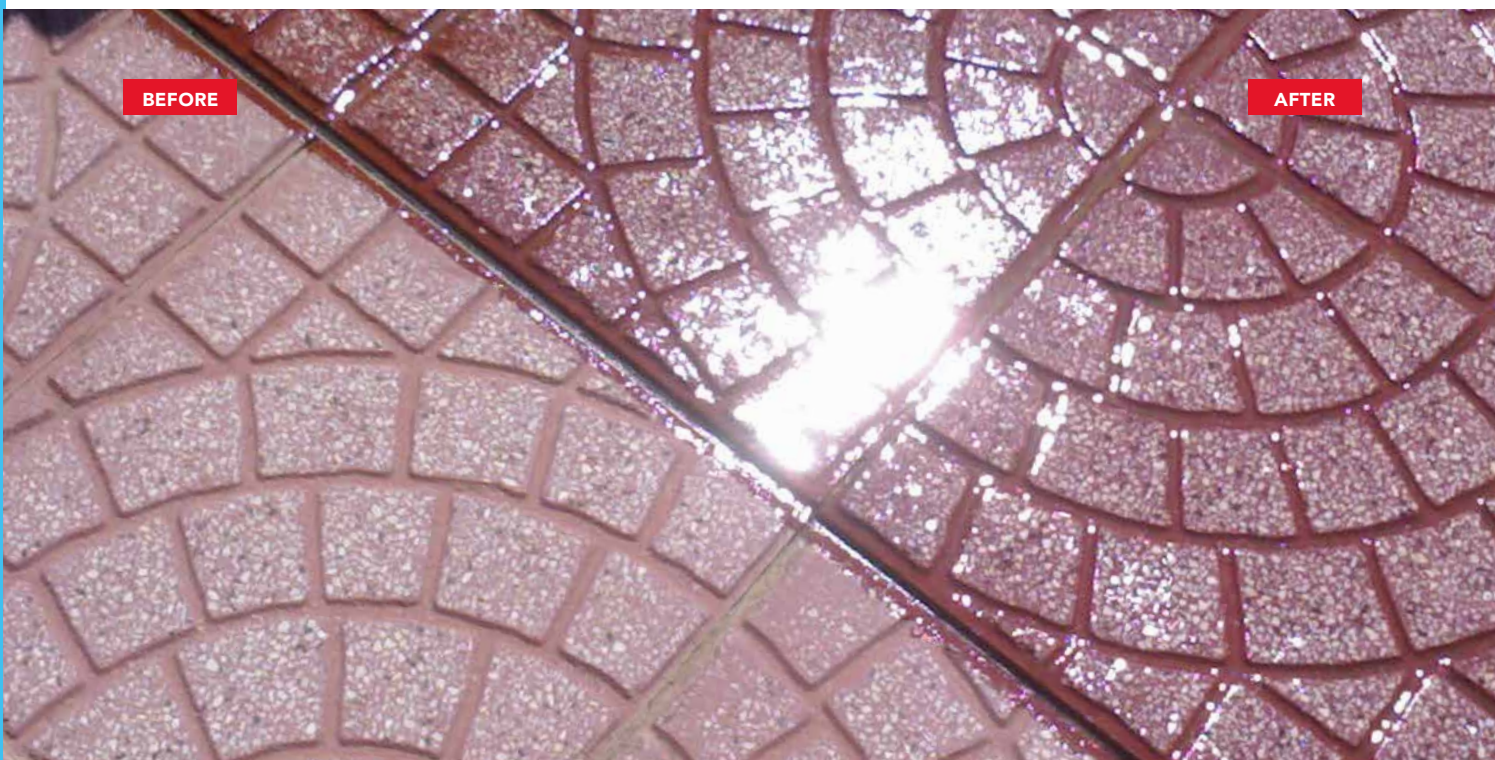
## APPLICATION FIELDS

- Balconies and terraces without removal
- All ceramic and tile substrates
- Concrete glass
- Plexiglass

## CERTIFICATIONS

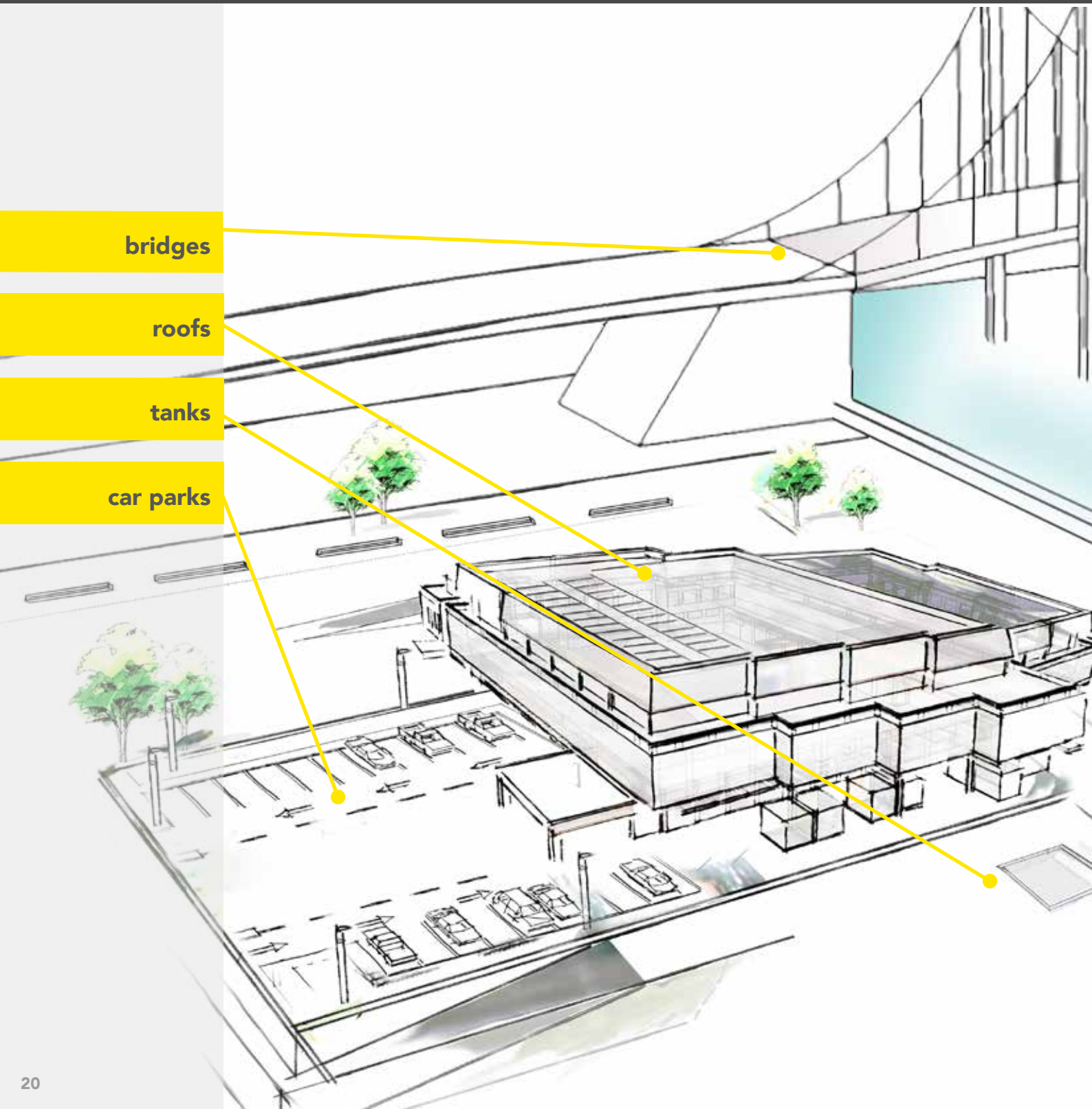


**PACKAGING** : 5 kg



# POLIUREA

**STARFLEX HR System** are polyurea-based waterproofing systems, two-component spray applicable, ideal for quick applications



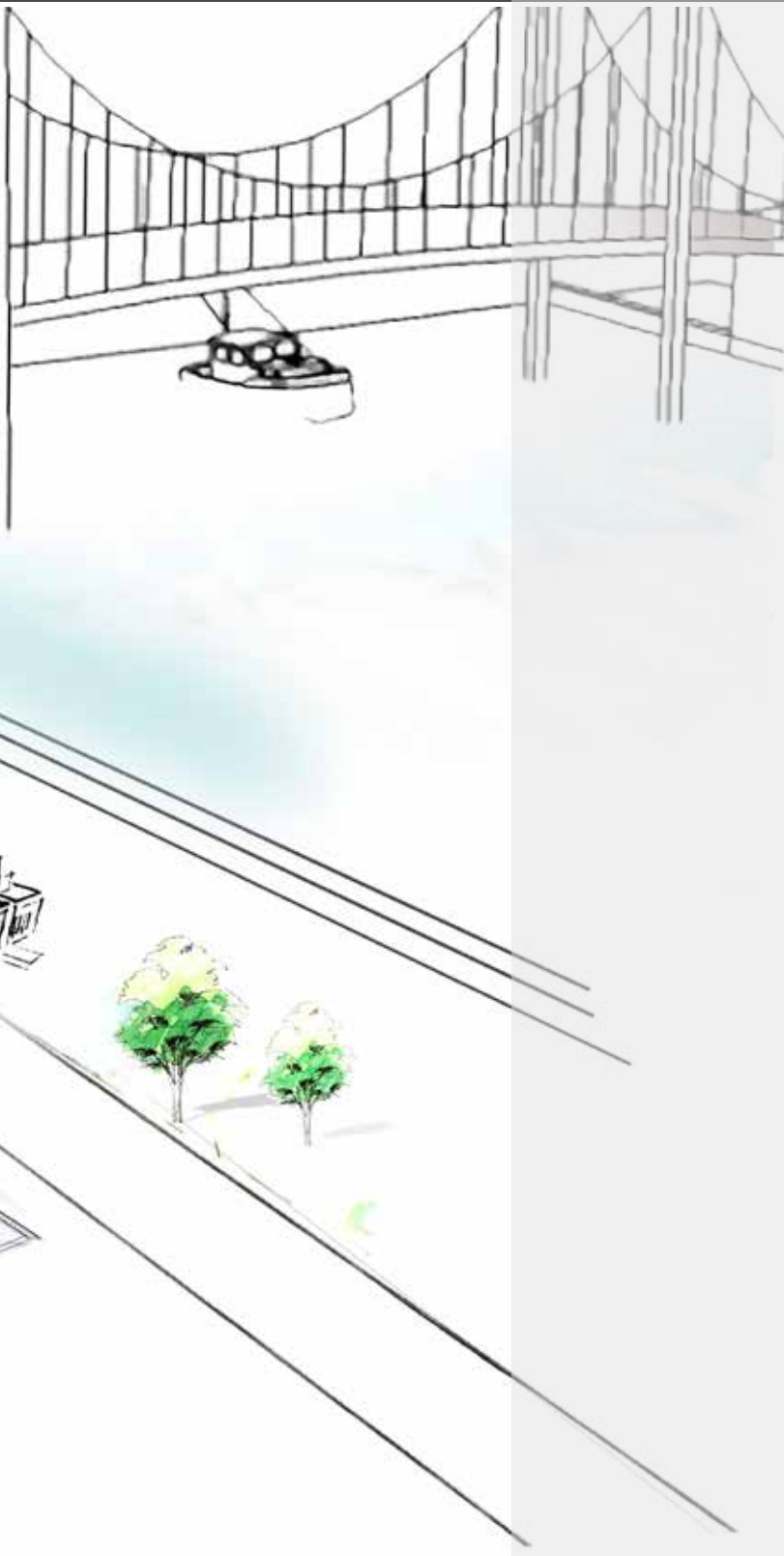
bridges

roofs

tanks

car parks





## MEMBRANE

**STARFLEX HR-M**  
manual poliurea

**STARFLEX HR**  
pure poliurea

**STARFLEX HR-S**  
soft poliurea

**STARFLEX HR-E**  
hybrid poliurea

## TOP COATS

**STARFLEX MONO TOP**

**POLISTAR E/P**

## BENEFITS

**2 COMPONENT**

**ULTRA FAST**

**ULTRA STRONG**

# STARFLEX HR-M



MANUAL POLYUREA  
TWO COMPONENT



CERTIFIED  
DURABILITY

## BENEFITS

- ✓ **High thickness** self-leveling application
- ✓ High **mechanical resistance**
- ✓ **Fast curing**
- ✓ **Drive over**

## APPLICATION FIELDS

- Car parks
- Walkways
- Balconies and terraces

## CERTIFICATIONS



PACKAGING : 18 kg



# STARFLEX HR



FAST POLYUREA  
TWO-COMPONENT  
PURE



CERTIFIED  
DURABILITY



## BENEFITS

- ✓ High **mechanical resistance**
- ✓ High **elasticity**
- ✓ **Fast curing**
- ✓ **Drive over**

## APPLICATION FIELDS

- Car parks
- Civil and industrial roofing
- Petrochemical, agricultural and industrial plants
- Plumbing, pipelines, pipes and dams
- Drinking water systems

## CERTIFICATIONS



**PACKAGING** : 450 Kg (A+B)



BEFORE

AFTER





# STARFLEX HR-S



FAST POLYUREA  
TWO-COMPONENT  
PURE SOFT



CERTIFIED  
DURABILITY



## BENEFITS

- ✓ High **mechanical resistance**
- ✓ High **elasticity**
- ✓ **Fast curing**
- ✓ **UV resistance**

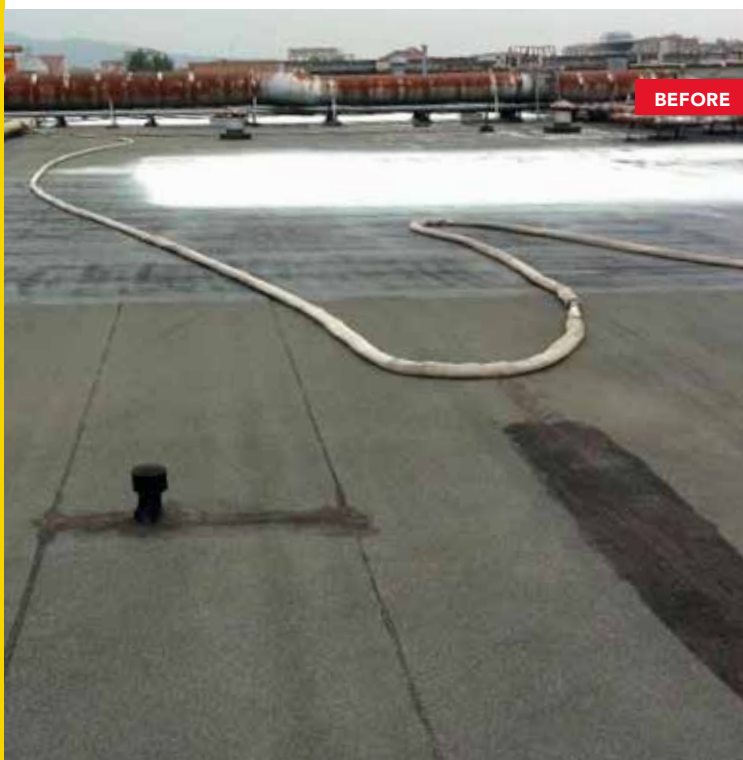
## APPLICATION FIELDS

- Civil and industrial roofing
- Petrochemical, agricultural and industrial plants
- Plumbing, pipelines, pipes and dams
- Bridges, viaducts and underground structures

## CERTIFICATIONS



**PACKAGING** : 450 Kg (A+B)



BEFORE



AFTER

# STARFLEX HR-E



FAST POLYUREA  
TWO-COMPONENT  
HYBRID



## BENEFITS

- ✓ High **mechanical resistance**
- ✓ High **elasticity**
- ✓ **Fast curing**
- ✓ **Wide range** of application fields

## APPLICATION FIELDS

- Civil and industrial roofing
- Petrochemical, agricultural and industrial plants
- Bridges, viaducts and underground structures

## CERTIFICATIONS



**PACKAGING** : 450 Kg (A+B)





# STARFLEX MONO TOP S



ONE-COMPONENT TOP COAT  
ALIPHATIC POLYURETHANE



CERTIFIED  
DURABILITY



## BENEFITS

- ✓ **UV resistant**
- ✓ High resistance to atmospheric agents
- ✓ **Stable** coloring
- ✓ **Simple** application

## APPLICATION FIELDS

- Roofs
- Terraces
- Balconies
- Gangways
- Car parks

## CERTIFICATIONS



\* BBA e ETAG 005 pending

**PACKAGING** : 9 kg





# POLISTAR E/P



TWO-COMPONENT TOP COAT  
ALIPHATIC POLYURETHANE TOP COAT

## BENEFITS

- ✓ UV resistant
- ✓ High solar reflection index (SRI > 90%)
- ✓ Drive over

## APPLICATION FIELDS

- Roofs
- Terraces
- Balconies
- Gangways
- Car parks

## CERTIFICATIONS



**PACKAGING** : 13 kg (A+B)

**THINNER** : DILUENTE 6



CERTIFIED  
DURABILITY



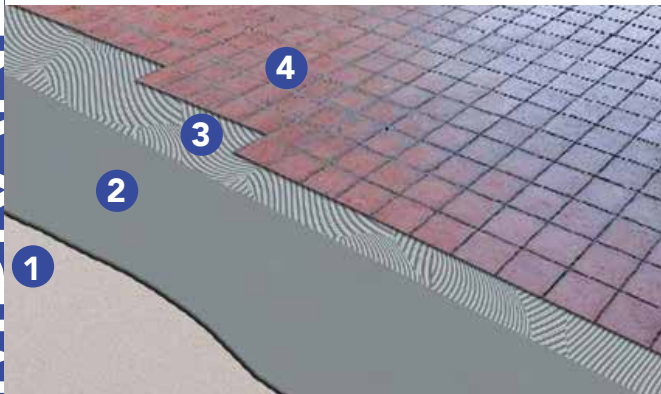
MIGLIORAMENTO  
TERMICO DELLA  
COPERTURA



# STARFLEX C



TWO-COMPONENT MEMBRANE  
ELASTIC CEMENTITIOUS WATER  
BASED



## BENEFITS

- ✓ High **adhesion** on all substrates
- ✓ **Permeability** to water vapor
- ✓ High **elasticity**
- ✓ **Crack bridging** properties
- ✓ Direct **adhesion** with C2TES1 glue

## APPLICATION FIELDS

- Roofs, terraces and balconies
- Wet areas under tiles
- Swimming pools
- Tanks

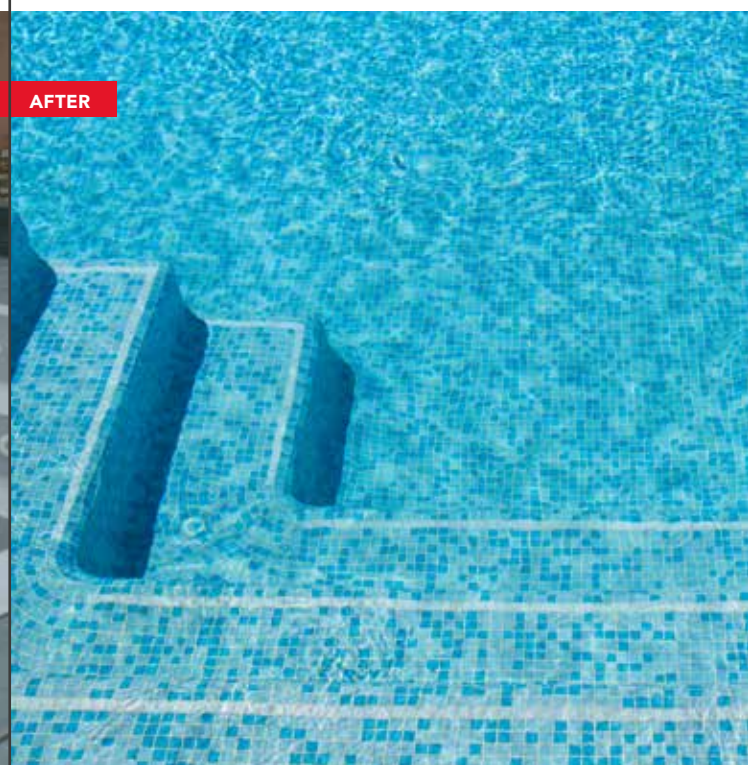
## CERTIFICATIONS



PACKAGING : 20 Kg



BEFORE



AFTER

# RESPONSIBILITY AND RESPECT FOR THE ENVIRONMENT

*"I think having land and not ruining it is the most beautiful art that anybody could ever want to own"*

Andy Warhol

Internal environmental quality



Certifications  
**ENVIRONMENTAL**



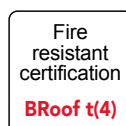
Certifications

**PRODUCT SAFETY**



Certifications

**FOR FIRE RESISTANCE**



Certifications

**OF MANAGEMENT SYSTEM**



Certificate no. 12370

Certifications

**Of DURABILITY**



\* BBA e ETAG 005 pending





web email



Skype



Technical assistance



**PURE**  
technology



R&D:  
Research lab  
and **Development**



Department  
technical  
and marketing



**mpm srl**

**materiali protettivi milano**

**operational and administrative headquarters:**

mpm hellas ΕΠΕ  
Ναπ. Ζέρβα 10 Θεσσαλονίκη  
[www.mpmhellas.gr](http://www.mpmhellas.gr)  
[info@mpmhellas.gr](mailto:info@mpmhellas.gr)

